



Mount Barker Land Report

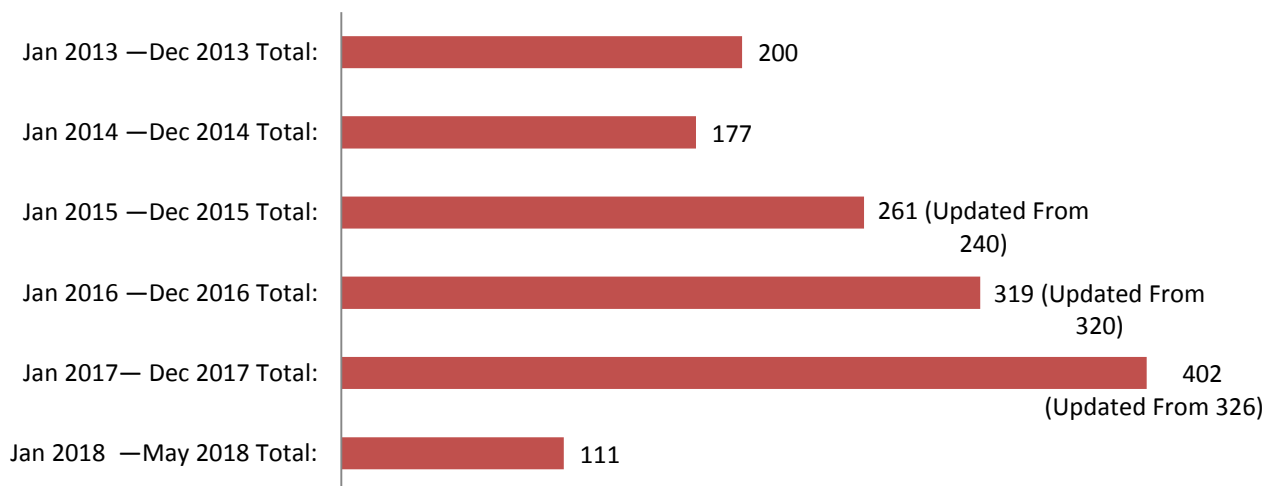
June 2018 Issue

At a Glance

Current larger developments – Bluestone, Aston Hills, Minters Field, Springlake & Newenham are continuing to market and develop new stages.

Glenlea, The Lodge, Clover Park and Matilda Rise have ongoing construction.

Total Land Settlements



Please note that there have been adjustments to past reported figures



Land Settlements per Month

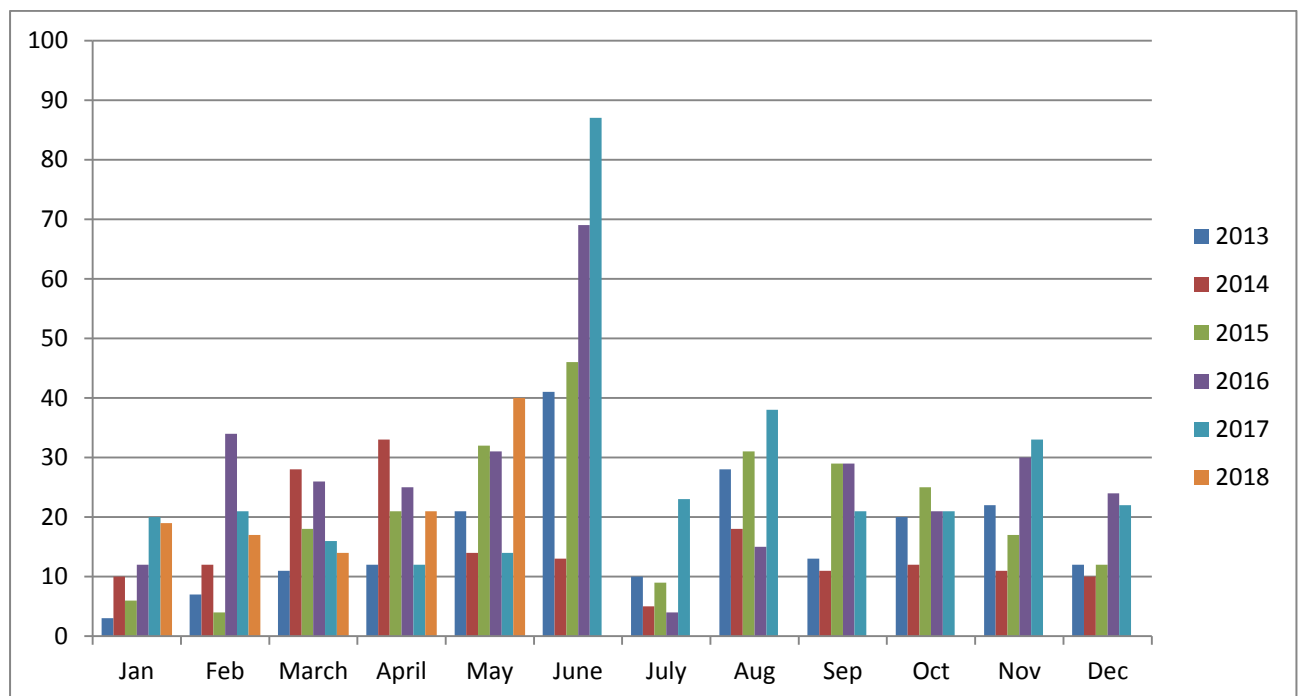
	Jan	Feb	Mar	Apr	May	June	July	Aug	Sep	Oct	Nov	Dec
2013	3	7	11	12	21	41	10	28	13	20	22	12
2014	10	12	28	33	14	13	5	18	11	12	11	10
2015	6	3	18	22	32	47	10	37	30	25	19	12
2016	13	38	26	25	31	69	4	14	28	20	30	21
2017	19	19	15	21	26	118	24	43	25	33	36	23
2018	19	17	14	21	40							

Total –

- 2013 - 200
- 2014 - 177
- 2015 – 261 (Updated From 240)
- 2016 - 319 (Updated From 320)
- 2017 – 402 (Updated From 326)
- 2018 - 111

Please note that there have been adjustments to past reported figures

Note – There is fluctuation in RP Data past sales and the tables & graph in this report have been updated to reflect this.





Mount Barker Update - Mount Barker Subdivision Activity;

Bluestone:

Refurbished Parkindula Homestead is now operating as the sales office and the growing Display Village is open. Construction of the community tennis court and playground underway.

Spring Lake:

The Lakehouse with its Gallery and Café are nearing final completion with the grand opening expected in July. The first stage of the Watson land release is nearing completion, and bitumen has been laid.



Minters Fields:

Construction & Marketing ongoing.

Newenham:

Stage 1c construction is nearing completion and a range of blocks have been released to the general public.

Glenlea:

Construction & Marketing ongoing.

The Lodge:

Construction is ongoing with reported pre sales at high levels.

Aston Hills:

Construction & Marketing is ongoing.

Work has commenced on a brand new 'Where We Grow Early Learning Centre' (child care) at Aston Hills.

Matilda Rise:

Some construction activity on site.

Clover Park:

Construction has commenced and the first release is now underway.



Mount Barker

The expansion of community facilities is ongoing.

- New synthetic hockey pitch for Anembo Park.
- The Prime Minister has announced a \$10,000,000 grant to the Mount Barker Council to build a new aquatic facility for the area.
- Planning for the Regional Sports Hub is ongoing.
- Construction of the new basketball complex off Springs Road is underway.



Nairne

The Nairne Main Street upgrade is well underway with new kerbing and drainage, new street trees, paved footpaths, street furniture and ground level landscaping.

Australia's Biggest Morning Tea at SEXTON / GLOVER / WATTS

The team at Sexton Glover Watts, along with family and friends, recently hosted a Biggest Morning Tea in conjunction with the Cancer Council. The nationwide event encourages the community to host a morning tea and raise funds for Cancer Research.

